

**LEISTER**

PROCESS HEAT

**ALLIED**  
POWER TOOLS

# MISTRAL

## SYSTEM and PREMIUM

The inimitable  
hot-air blower.



[www.leister.com](http://www.leister.com)

**We know how.**

# The new MISTRAL: The inimitable hot-air blower.

Two model groups are available in this range – the MISTRAL <sup>2/4/6</sup> PREMIUM, and the top-of-the-range MISTRAL <sup>6</sup> SYSTEM. All MISTRAL <sup>6</sup> devices are equipped with a maintenance-free brushless blower motor, making them perfectly suited to continuous operation. The MISTRAL <sup>6</sup> SYSTEM can either be operated using its integrated controls or via an external system interface.

## Hot-air blowers


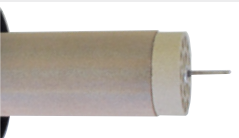




### MISTRAL PREMIUM/SYSTEM

1		<b>Maintenance-free</b> Thanks to its brushless motor, the new MISTRAL <sup>6</sup> PREMIUM/SYSTEM is perfectly suited to continuous operation.
2 / 3		<b>Innovative:</b> Using the "e-drive" operating unit, the air volume and temperature for the MISTRAL SYSTEM can be adjusted to suit every application.  <b>Fully-integrated:</b> Main switch with integrated function pushbutton for programming (MISTRAL SYSTEM).
4		<b>Multifaceted:</b> Can be operated as a device with integrated control or via an external system interface for integration into a closed-loop system (MISTRAL SYSTEM).
5		<b>Informed:</b> Display with user status information and programming (MISTRAL SYSTEM).



MISTRAL SYSTEM

	PREMIUM			SYSTEM
	2	4	6	6
1. Brushless blower motor			✓	✓
2. Brush motor with replacement carbon brushes		✓		
3. Brush motor	✓			
4. Integrated heating element and tool protection	✓	✓	✓	✓
5. Integrated code switch for potentiometer (internal/external)	✓	✓	✓	
6. Infinitely adjustable heating capacity and air volume with the "e-drive"				✓
7. Automatic cool-down function				✓
8. Remote control interface for temperature/air volume				✓
9. Integrated temperature probe				✓
10. Target/actual values display				✓

6		<b>Innovative design:</b> Special diaphragm for an even airflow distribution and an optimized, aerodynamic airflow velocity.
7		<b>Integrated:</b> Thermal probe in the MISTRAL SYSTEM for enhanced precision.
8		<b>Quick to connect:</b> Thanks to the integrated air-hose connection adapter with its internal 1-inch thread, an additional adapter is not required.
9		<b>Convenient:</b> It is not only its state-of-the-art industrial design that is sure to impress, but also its convenient mounting tabs.
10		<b>Automatic cooling:</b> The MISTRAL SYSTEM is equipped with an automatic cool-down function. In the MISTRAL PREMIUM, the blowers and heating can be switched on and off separately.
11		<b>Easy to switch:</b> The MISTRAL PREMIUM can be switched from an internal to an external potentiometer. As a result, the temperature can even be controlled from the outside.

Hot-air blowers

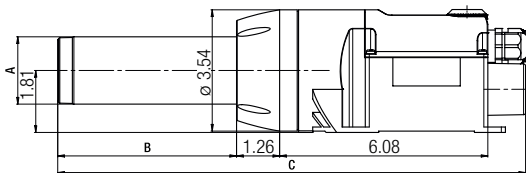
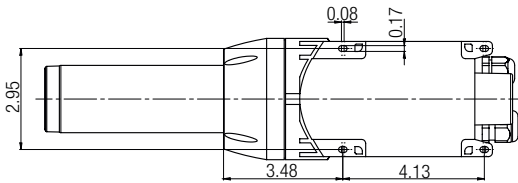
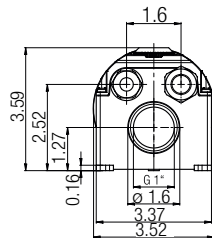
**MISTRAL PREMIUM/SYSTEM**



**MISTRAL PREMIUM**

Installation dimensions in inch

	A	B	C
230V/2300 W	∅ 1.44	4.05	12.5
230V/4500 W	∅ 2.0	5.2	13.67
230V/3400 W 120 V/2400 W	∅ 2.0	4.05	12.5

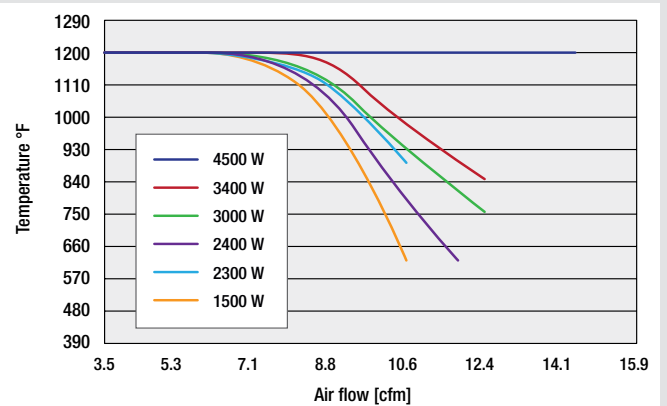


Technical data	MISTRAL 2/4/6 PREMIUM						
Model	2	4	6	6	6	6	
Voltage	V~	230	120	120	230	230	230
Power	W	3400	2400	2400	2300	3400	4500
Temperature open	°F	968	914	806	832	950	1200
Max. air volume (68 °F)	cfm	12.4	10.6	12.4	10.6	12.4	14.1
Pressure	psi	0.5	0.5	0.36	0.36	0.36	0.36
Weight	lbs	3.1	3.1	3.1	3.1	3.1	3.1
Article no. MISTRAL 2/4/6 PREMIUM	147.963	147.964	147.965	148.006	147.966	147.967	

Model	MISTRAL 6 SYSTEM						
Voltage	V~	100	120	200	230	230	230
Power	W	1500	2400	3000	2300	3400	4500
Temperature open	°F	1200	1200	1200	1200	1200	1200
Air volume (68 °F)	min.	cfm	3.53	3.53	3.53	3.53	3.53
	max.	cfm	10.6	12.4	12.4	10.6	12.4
Pressure	psi	0.5	0.5	0.36	0.36	0.36	0.36
Weight	lbs	2.6	3.1	3.1	2.6	3.1	3.1
Article no. MISTRAL 6 SYSTEM	147.972	147.969	147.973	147.975	146.701	147.971	

Frequency	Hz	50/60
Emission levels	dB(A)	65
Dimensions		see bottom left
Mark of conformity		CE
Protection class II		□

We reserve the right to make technical changes





**We are local. Worldwide.**

Leister Technologies AG  
Galileo-Strasse 10  
CH-6056 Kaegiswil / Switzerland  
phone: +41 41 662 74 74  
fax: +41 41 662 74 16  
leister@leister.com

Leister Technologies LLC  
Itasca, IL 60143 / USA  
phone: +1 630 760 1000  
info@leisterusa.com

Leister Technologies Ltd.  
Shanghai 201 109 / PRC  
phone: +86 21 6442 2398  
leister@leister.cn

Leister Technologis KK  
Yokohama 222-0033 / Japan  
phone: +81 45 477 36 37  
info@leister.co.jp

Leister Technologies Benelux BV  
3991 CE Houten / Nederland  
phone: +31 (0)30 2199888  
info@leister.nl

Leister Technologies India Pvt  
600 041 Chennai / India  
phone: +91 44 2454 3436  
info@lipipolymers.com

**Our close worldwide network of more than 120 Sales and Service Centres in more than 90 countries.**

**Europe:**

- Austria
- Belarus
- Belgium
- Bulgaria
- Croatia
- Cyprus
- Czech Republic
- Estonia
- Denmark
- Finland
- France
- Germany
- Great Britain
- Greece
- Hungary
- Ireland
- Iceland
- Italy
- Kazakhstan
- Latvia
- Lithuania
- Netherlands
- Norway
- Poland
- Portugal
- Romania
- Russia
- Serbia
- Slovakia
- Slovenia
- Spain
- Sweden
- Switzerland
- Turkey
- Ukraine

**America:**

- Canada
- Mexico
- USA
- Argentina
- Brazil
- Chile
- Columbia
- Costa Rica
- Ecuador
- Venezuela
- Peru

**Africa:**

- Algeria
- Egypt
- Kenya
- Morocco
- South Africa
- Tunisia

**Middle East:**

- U.A.E.
- Saudi Arabia
- Qatar
- Iran

**Asia Pacific:**

- P.R.China
- Hong Kong
- India
- Indonesia
- Japan
- Korea
- Malaysia
- Mongolia
- Philippines
- Singapore
- Taiwan
- Thailand
- Vietnam

**Oceania:**

- Australia
- New Zealand

© Copyright by Leister, Switzerland

Distributor Addresses:



**Allied Power Tools**

12/ 76 Rushdale St, Knoxfield VIC 3180 Australia  
T: + 61 3 9764 2911  
E: sales@alliedpowertools.com.au  
W: www.alliedpowertools.com.au